



THE MANOR LODGE

REPTON



Stay&Co.
MANAGEMENT

WELCOME GUIDE

Stay&Co Management

W E L C O M E

Dear Guest,

Thank you for choosing to stay with us. We hope you enjoy this space.

To make sure you have everything you need for a happy stay, please take a few minutes to go through this guide which will answer lots of questions you may have.

If you do require assistance, our WhatsApp service is the fastest way to connect. You can also email us on info@stayandco.uk or call us on 0121 285 3705.

*Best Wishes,
Stay & Co*



THE MANOR LODGE
REPTON

LOCK BOX GUIDE

WELCOME GUIDE

Stay&Co Management

LOCK BOX GUIDE

The lock box located by the front door, houses the front door key only. This key remains on site and should not be removed. Please ensure you have your code with you when you leave the property and the code on the box is scrambled when not in use.



Your codes will be sent prior to arrival.



THE MANOR LODGE
REPTON

HOUSE RULES

WELCOME GUIDE

Stay&Co Management

HOUSE RULES

We have some house rules in place to ensure Manor Lodge stays at the same excellent condition for each guest and also so we remain a respectful venue within the community. We kindly ask all our guests to keep within these guidelines.

NO SMOKING / VAPING OR DRUGS

We operate a strict no smoking, vaping or drugs policy anywhere in the property. Smoking is only permitted outside away from the house and cigarette waste disposed in the allocated ash tray. There is a £200 fine if there is any smoking or drug use in the house.

SOUND POLICY

Manor Lodge remains an exclusive venue and as we have close community, we remain respectful of our neighbours. We have a quiet zone outside from 10pm which includes no further use of the Hot Tub and a sound policy inside from 11pm, which is no excessive noise or music.

HOT TUB & GYM

Please familiarise yourself with the rules of use further in this booklet.

HOUSE RULES

NO GLASSWARE OUTSIDE

Please use the acrylic options which can be located in the tall sideboard unit in the kitchen. No glassware can be taken outdoors.

OVER NIGHT GUESTS

Only the guests booked to stay are eligible to stay overnight.

PARKING

There is a strict parking policy in the area. There is no parking on any neighbours property or where access is blocked for others, e.g the lane leading to the gates. Only parking on the private drive through the black gates

CONDITION OF PROPERTY

We pride ourselves on the standard of accommodation we offer all our guests. We kindly remind our guests to ensure furniture and equipment is used respectfully and responsibly. Any damage or items taken from the lodge will be deducted from the security deposit.

WE ARE NOT A PARTY HOUSE

We understand that our property can be used by a larger amount of guests and can be booked for special occasions, however we do not accept gatherings over capacity and for large numbers of guests not booked to stay at Manor Lodge





THE MANOR LODGE
REPTON

USER GUIDES

WELCOME GUIDE

Stay&Co Management

U S E A G E G U I D E

To make sure you settle in straight away, these are some quick guides on how to use the equipment in the house. You can also find all this information online at

T H E R A N G E C O O K E R

Please ensure all hobs and ovens are off after use. The security feature means knobs have to be pressed in and held before pressing the ignition button

Q U O O K E R T A P

The red light will indicate the tap is on. The knob to the left of the tap operates the Quooker tap. When this is rotated towards you, instant boiling water will flow from the tap, so please be careful.

H O T T U B

Please watch our user guide video and see the document later in this document.

W I - F I

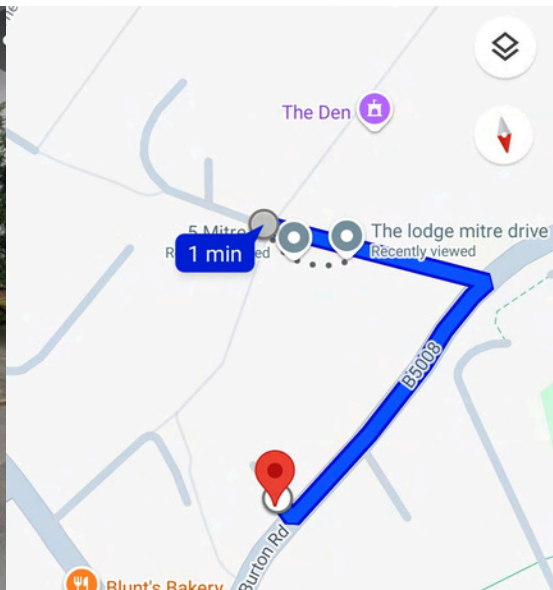
Network: Sky57hdj

password: 3iY9G1V4bpNU

Box located on the small table in the entrance room.

PARKING GUIDE

This layout is to maximise space on the drive for 6- 7 cars dependent on size. Please ensure you do not park on the gravel lane which leads to the house or driveway area outside of our grounds. If you have more cars there is a free carpark a short distance from the house. Burton Road Carpark next to John Port Travel



S O F A B E D

On the sofa to the left in the lounge, there is a fabric tab which is used to pull the seating area out to create the bed base. If you have opted to make up the bed yourselves when you are ready, bedding will be provided for you. This can sleep two.



HEATING

The heating is run on a schedule and will be prepared for your arrival. If you require the heating on outside of these times, the central thermostat can be turned to 20°C and this will boost the heating between the scheduled times. The thermostat is located on the wall next to the kitchen door in the entrance hall.





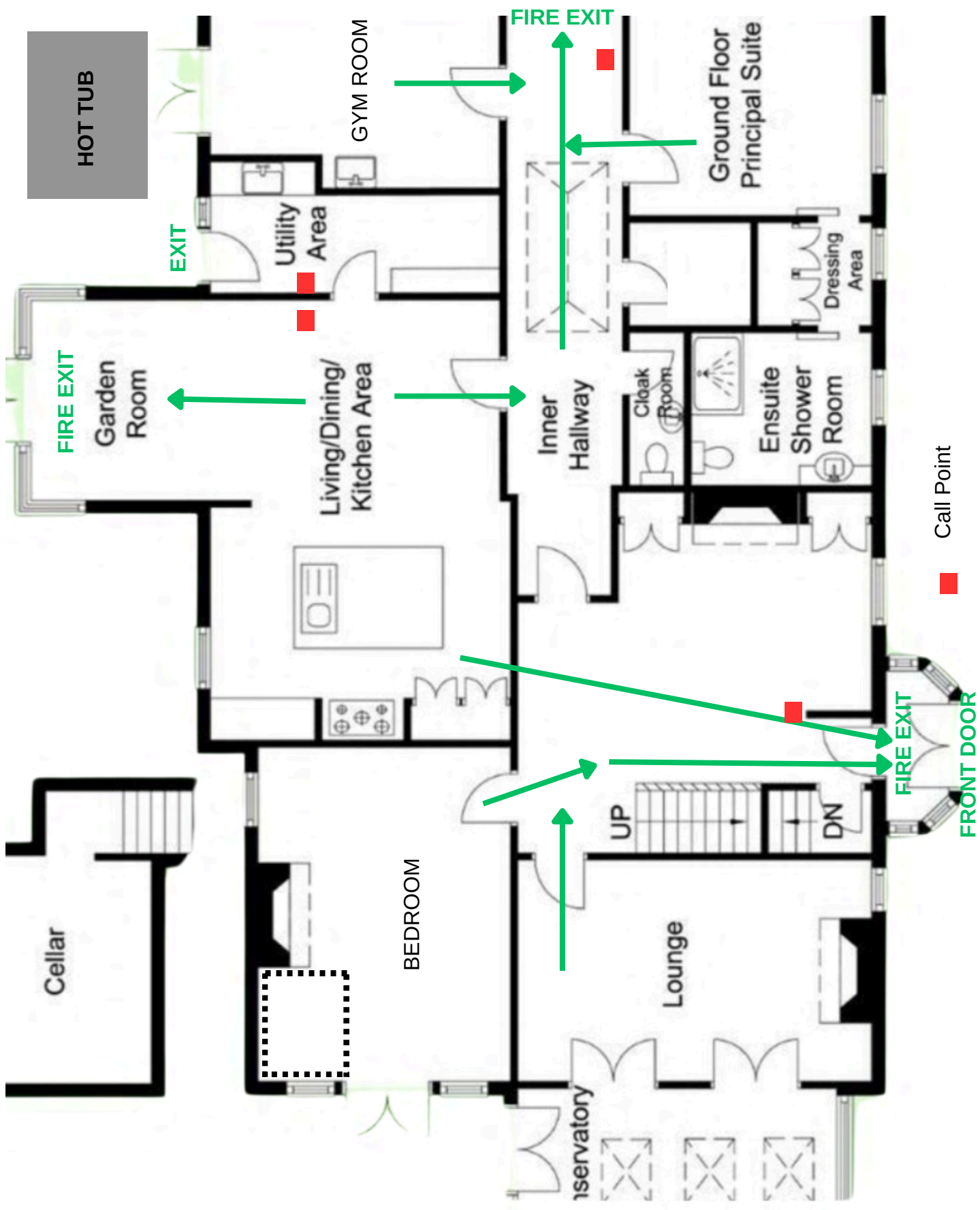
THE MANOR LODGE
REPTON

EMERGENCY INFORMATION

WELCOME GUIDE

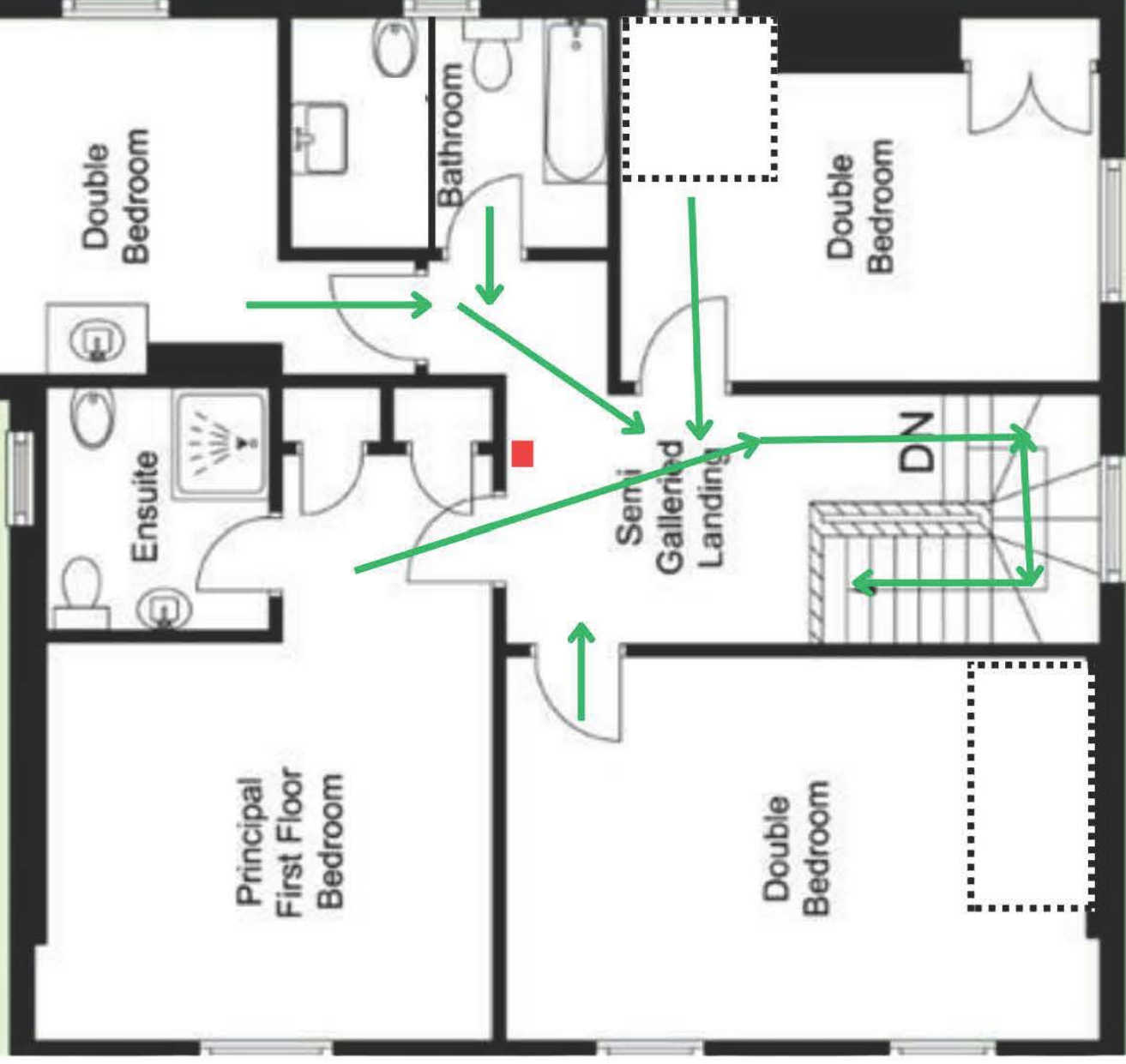
Stay&Co Management

Ground Floor Fire Escape Plan



From all bedrooms, leave via the landing, down the stairs and through the front door as your primary escape route

First Floor Fire Escape Plan





THE MANOR LODGE
REPTON

LOCAL GUIDES

WELCOME GUIDE

Stay&Co Management

THE LOCALS

THE BULLS HEAD A.MOSS BUTCHERS



THE BOOT INN

Just a few minutes walk into the village, you can find some fantastic places to eat

Both the Bulls Head and The Boot offer award winning pubs and the local family butchers, A.Moss , is a local gem. Doubling up as the local farm shop, they also do a range of breakfast, lunch and snack takeaway options.

THE LOCALS

REPTON TAXIS PRIVATE CHEFS

**DO YOU NEED A
REPTON TAXI?**

Call now to book
Repton's Premier taxi
service
01283 544700

[Book Online Now](#)

Repton
Taxi Service

MARK HADFIELD
Event Catering & Private Chef Services

Professional services for all types
of private and corporate events

Years Experience
Gold Medalist

07446 403111
events@mark-hadfield.co.uk
Find us on:  



THE DRAGON

Private chefs can be booked to offer a private catering service. Mark Hadfield has previously been booked at the venue. The Dragon, Willington, can also offer a catering service and is a good quality, local pub and restaurant.



THE MANOR LODGE
REPTON

HOT TUB & GYM GUIDANCE

WELCOME GUIDE

Stay&Co Management

HOT TUB AND GYM

Please read the following details carefully as they form the contract of usage.

In addition to the below, we would ask that guests shower prior to use and we would advise a shower after. Suitable footwear such as flip flops/sliders/crocs to be worn from the house to the hot tub and vice versa. This is to protect you from slippery surfaces and from stones damaging the filter system.

Usage of the hot tub

We have strict usage policies to ensure the safety of our guests. By agreeing you acknowledge and agree to the following.

- No un authorised use of the hot tub (if closed for maintenance or any other reason deemed necessary by management, if waiver has not been signed, if booking is not inclusive of hot tub usage, if not a named party on the booking, any person not eligible to use the hot tub as per conditions in waiver)

- No usage for children under the age of 16

Please note: Children under the age of 3 are not to use any hot tub facility due to their body temperature regulation

- No usage for any pregnant person at any point during pregnancy

- No usage for any person suffering with heart conditions

- No usage by any intoxicated persons under the influence of any substance or alcohol

- No diving , jumping or submersion under water

- No glassware in the hot tub. Only use of plastic ware provided. Breakages of glass have to be immediately reported for safety reasons. No deposit will be returned until the hot tub has been checked.

- No urination or contamination by other bodily substances

- No acts of a sexual nature in the hot tub

- No changing of settings or tampering with hot tub equipment

- The cover must remain closed when not in use and after use

- The hot tub is only for use by whole house bookings

- The hot tub is tested regularly for PH levels and we do use Bromine and standard hot tub cleaning chemicals, we do not accept responsibility for skin sensitivities.

- No use after 10pm

- Any fault or issue must be reported to management.

- Strictly no use by any person not in the booking party and no more than 9 persons to use at any one time

**If the hot tub has to be drained and treated by specialists due to the misuse by guests, there will be an automatic £500 fee. (E.g Broken glass in the filter system)

HOT TUB AND GYM



WARNING

REDUCE THE RISK OF ELECTROCUTION

1. Never place an electric appliance within 5 feet of spa.

REDUCE THE RISK OF CHILD DROWNING

1. Supervise children at all times.
2. Attach spa cover after each use.

● REDUCE THE RISK OF OVERHEATING

1. Check with a doctor before use if pregnant, diabetic, in poor health, or under medical care.
2. Exit immediately if uncomfortable, dizzy, shivering, or sleepy. Spa heat can cause hyperthermia and unconsciousness. Sudden or prolonged exposure to cold water immersion can cause hypothermia and related injuries.
3. Spa heat or immersion in cold water in conjunction with alcohol, drugs, or medication can cause unconsciousness.

WHEN PREGNANT, soaking in hot/cold water for long periods can harm your fetus.
Measure water temperature before entering.

1. Do not enter spa if water is hotter than 100° F (38° C).
2. Do not stay in spa for longer than 10 minutes.



500610

HOT TUB AND GYM

Usage of the gym

We have strict policies for the use of the home gym equipment. Please read through carefully.

- No usage for children under 16 and any minor under 18 must be supervised by an adult
- This is an unmanned gym area. Use of equipment is entirely at your own risk
- Equipment provided must be used as intended by the manufacturer, no misuse of the equipment
- Consult your own doctor before performing any exercise
- Do not give door codes to anyone not permitted to use the gym area
- Any faults or damage with equipment must be reported to management immediately
- Strictly no use by any person not in the booking party.

IN THE CASE OF ANY MEDICAL EMERGENCY CALL 999 IMMEDIATELY

HOT TUB USER GUIDE

Step 1

The Hot Tub has been tested prior to your arrival

Step 2

unclip the black cover and fold the cover from right to left. The black cover folds against the metal bar and then folds again into the open position. It stays in this open position whilst in use.

Step 3

The control panel will have been set between 35-39.5degrees for your comfortable useage- this can be controlled with the arrow buttons

Step 4

Turn on the jets using the following steps

- Press jets 1- 2 times
- Press jets 2- 1 time
- The jets will begin to bubble and circulate

Step 5

when not in use, please press jets 1 and jets 2 to deactivate
Turn off the lights if used

Step 6

The cover must be returned to closed after useage and between each use securing the clips

please be careful of wet surfaces and protect yourself from slips.

NOTE: NO ELECTRICAL DEVICES OR GLASS NEAR THE HOT TUB.

HOW TO USE THE HOT TUB

